



CATALYST
FOR
PAYMENT
REFORM



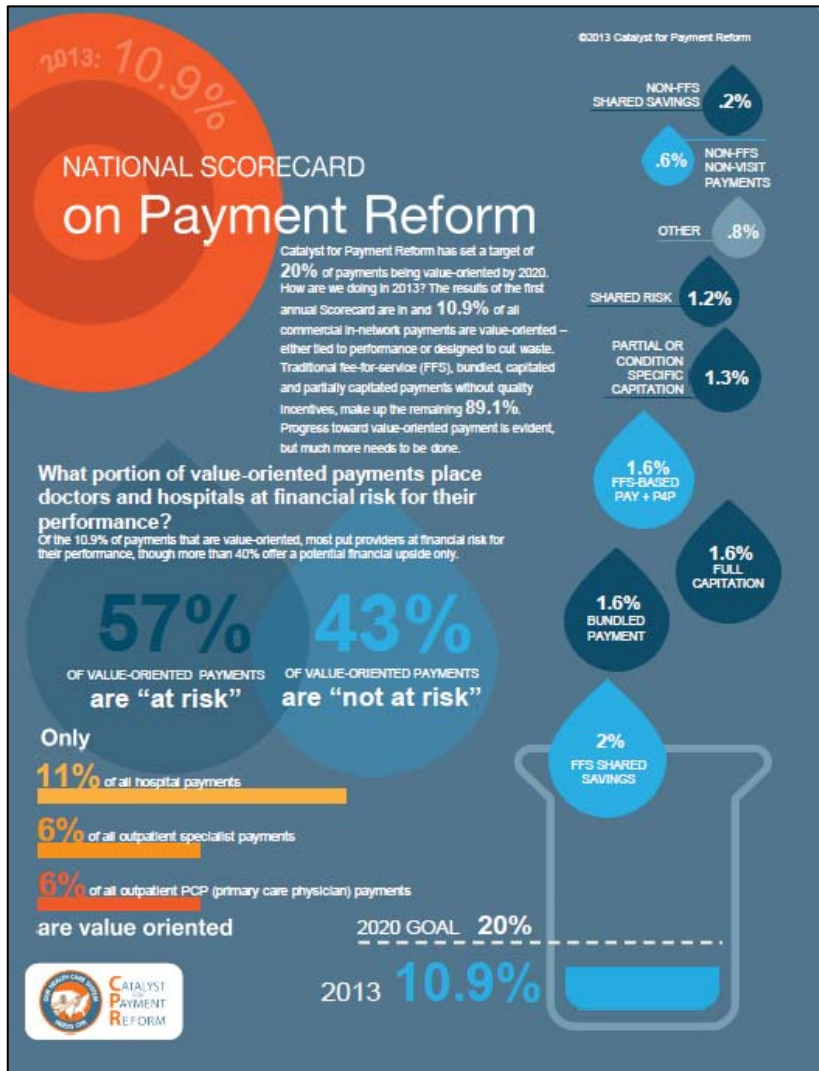
Putting The
Pieces Together

Are We Moving Payment from Volume to Value?

Suzanne Delbanco, PhD – Executive Director



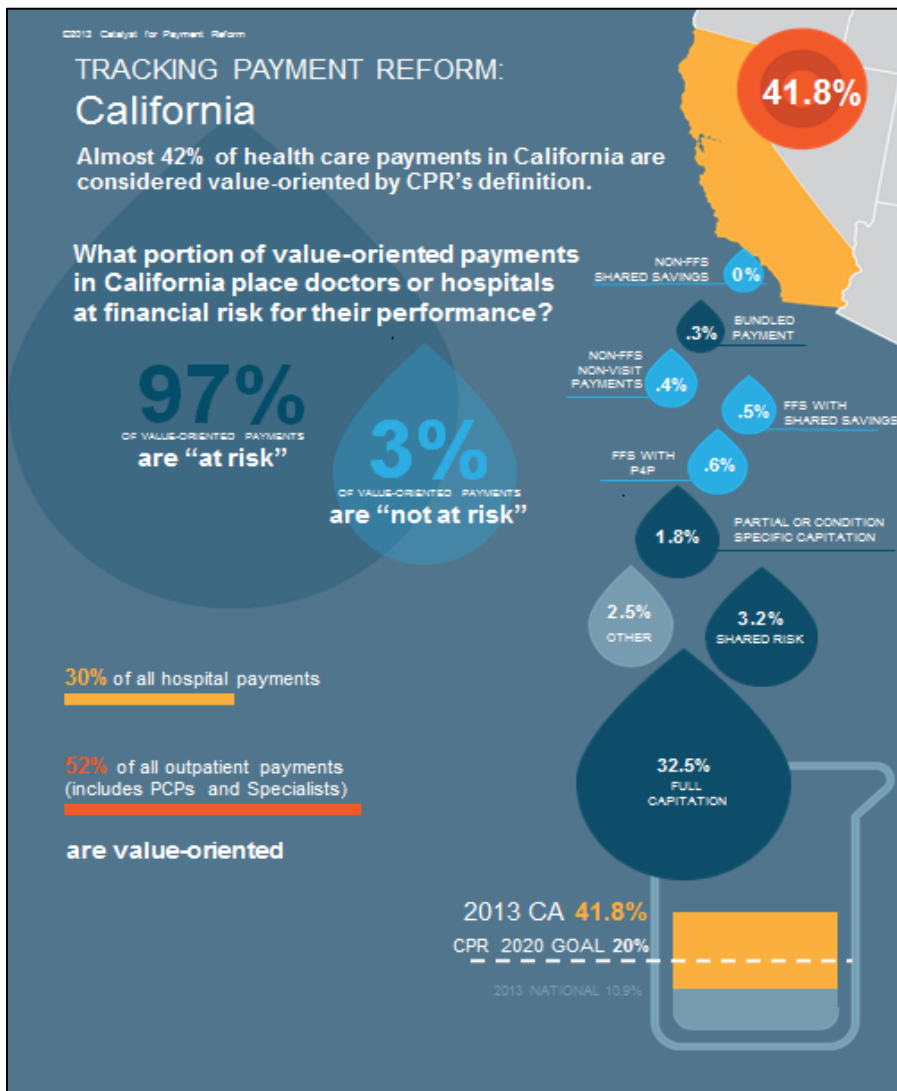
National Scorecard Results



- 10.9% of commercial in-network payments are value-oriented
- 57% of the value-oriented payment is considered “at-risk”
- 11% of payment to hospitals is value-oriented
- 6% of outpatient specialist and PCP payment is value-oriented
- Respondents may be larger than average health plans in the U.S. and include HMOs
- Scorecard results not statistically reliable, possibly biased upward as survey is voluntary and self-reported



Variation: California Scorecard Results



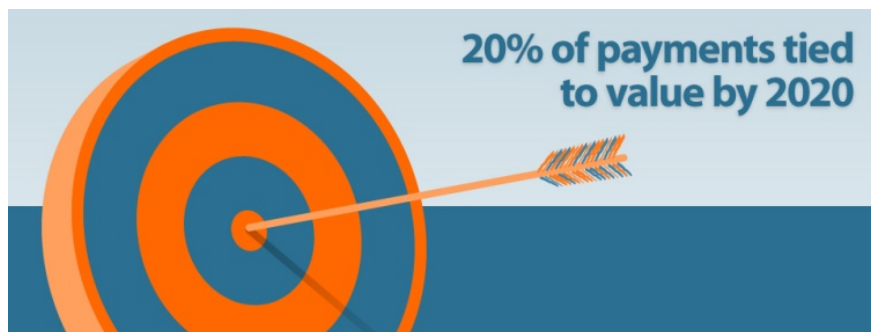
- 41.8% of commercial in-network payments are value-oriented
- 97% of the value-oriented payment is considered “at-risk”
- 30% of payments to hospitals are value-oriented
- 52% of payments to specialists and PCPs (outpatient) are value-oriented
- 32.5% of California’s payment is capitation with quality
- Scorecard results not statistically reliable, possibly biased upward as survey is voluntary and self-reported



How to Define Success

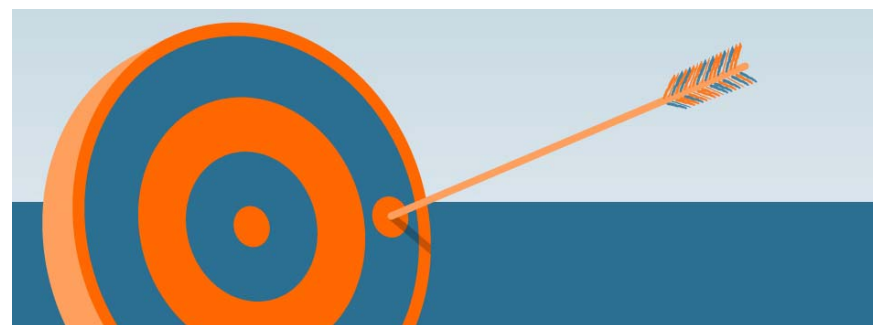
Are we going to hit our target but miss the bull's-eye?

CURRENT



- We are measuring implementation of “value-oriented payment” methods.
- What happens if we get to 60%, 70%, or 80% by 2020 but value hasn’t improved?
- Bundled payment proven to work best, but only 1.6% payment is bundled now

FUTURE



- a preponderance of payment flowing through methods proven to produce “value” ...



CATALYST
FOR
PAYMENT
REFORM

CPR Contact Information

FOR MORE INFORMATION VISIT:
www.catalyzepaymentreform.org



CONTACT:
Suzanne Delbanco
sdelbanco@catalyzepaymentreform.org

Andréa Caballero
acaballero@catalyzepaymentreform.org

